

INVISALIGN

let the journey begin ...



YOUR INVISALIGN PROVIDER

Jane Butterworth

Jane has undergone comprehensive orthodontic training over the past 30 years and has treated hundreds of patients with orthopaedic, fixed brace orthodontics and Invisalign. She accepts orthodontic referrals from other dentists and is always happy to offer advice to colleagues using the Invisalign system.

Jane has been using the Invisalign system for almost 20 years and has she has treated over five hundred cases with the system. She is considered to be an advanced provider through her knowledge and experience.

She is a Platinum Invisalign Provider which is awarded to Invisalign Certified doctors who have completed 41-80 cases a year in recognition of their commitment and experience.

Jane is a provider for Invisalign First (age 7-11 years) and Invisalign Teen (age 11- 18 years). There are many advantages of treating children with removable clear braces which include arch expansion to provide space for the adult teeth, correction of jaw position during their growth period, correction of tooth positioning etc.

She has great confidence and understanding of the system and is continually developing her own new and innovative techniques pushing Invisalign to the limit.



What makes a beautiful smile?



- Symmetry of your teeth (particularly your front teeth)
- How straight your teeth are i.e. not overlapping, crooked or spaced too far apart
- Tooth proportion
- Colour of your teeth
- Spaces between the tips of your teeth
- Smile width
- Gum health and gum line
- Shape, colour and fullness of lips

40% of people felt that straightening teeth was the most attractive improvement one could make to the look of the mouth.*

*Results from a survey of 300 respondents (50% male, 50% female) from across the UK, conducted on Tuesday 13th January 2015 by Positive Communications on behalf of Invisalign.

 **invisalign** | made to move

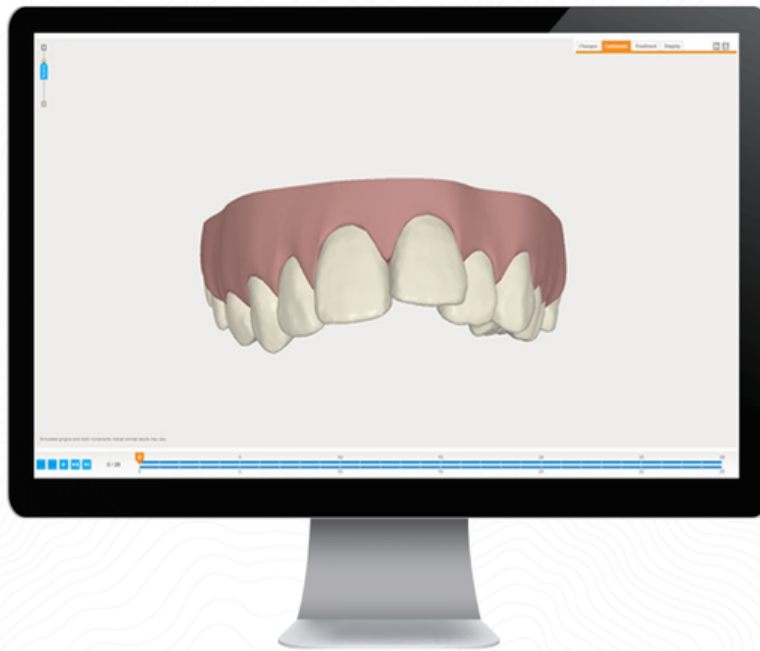
Invisalign aligners: the clear choice for a great smile.



The Invisalign System involves a series of clear and removable aligners that gently and gradually shift your teeth into position.

[▶ Read more...](#)

ClinCheck software. Customised 3D treatment plan.



Experience ClinCheck Software >

- A detailed treatment plan will be developed using ClinCheck®, our virtual 3D treatment plan
- ClinCheck shows the series of movements your teeth are projected to go through over the course of the treatment
- So you can see how your teeth are expected to look at the end of your Invisalign treatment before it even begins

Invisalign aligners: virtually invisible, lifestyle friendly.

The unique benefits of the Invisalign System are clear to see:



- Most people won't even notice you are wearing them
- Lifestyle-friendly for a busy work, travel or school schedule
- Potentially fewer doctor visits than some types of braces

Invisalign aligners: convenient, removable.



- Continue to eat the foods you enjoy, no special diet required
- Remove them briefly for special occasions such as weddings or big meetings. We recommend wearing them for 22 hours a day to stay on track for your treatment plan
- Continue your oral health routine to maintain healthy teeth and gums

Treatment process.

You and your doctor have decided that Invisalign treatment is right for you.



Step 1

Dental records are taken (e.g. photos, X-rays, intra-oral scans and/or impressions)



Step 4

You will be fitted with your aligners and given 4 sets to take home. You will wear each set of aligners for 1-2 weeks, and then move to the next set



Step 2

Your individual 3D treatment plan is created using your records, treatment strategy and treatment prescription submitted by your doctor



Step 5

At check ups every 8 weeks, your doctor will monitor if your treatment is progressing as planned, and will give you the next 4 set of aligners in the series



Step 3

A series of custom-made aligners are made using advanced 3D computer imaging printing technology. Your aligners are shipped to this dental practice, and we will contact you to make your first aligner-fitting appointment



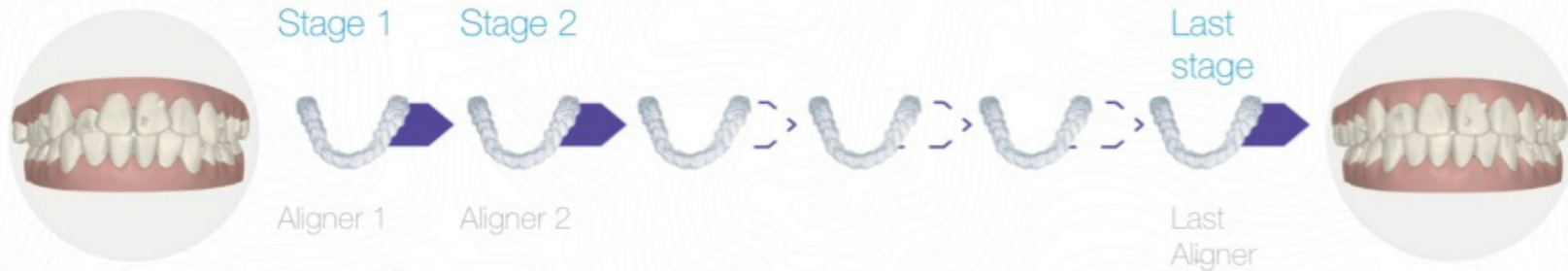
Step 6

When your treatment has finished, you will be fitted for retainers, which will help you protect your new smile by holding your teeth in their new position

Treatment process.

The Invisalign system is the clear way to a beautiful smile.

20-22 hrs/day remove to eat, brush and floss



A standard treatment usually takes 3-18 months

Change to next aligner every 1-2 weeks

Invisalign treatment examples.

Let's look at a case that is relevant to you.



> Crowding



> Underbite



> Over bite



> Spacing



> Crossbite



> Openbite



> Deep bite

> Read more...

TREATMENT EXAMPLES

Crowding

This lovely lady had rotated upper lateral incisors and a narrow smile.

Less than six months later she achieved the smile she dreamt of simply using our Invisalign programme.

Stunning!



Higher Lane
DENTAL PRACTICE



Jane Bottwood

Crowding and Wear

This young man wanted to improve his smile. He had severe crowding which had led to wear on his front teeth.

Following his Invisalign treatment to straighten his teeth and improve his bite we corrected the worn teeth with some subtle bonding

Confidence has led to some serious dating - we wish him luck!!



higher³ lane
DENTAL PRACTICE



Jose Botwin

Space closure

This lovely gentleman was embarrassed about the space between his upper teeth. He was a head teacher and concerned braces would interfere with his position at work. Invisalign was the perfect solution.

Here we are 6 months later... looking fabulous Sir!



higher3 *lowe*
DENTAL PRACTICE



Jose Bottrich

**Cross bite
correction with
very narrow
upper arch**



higher³ lower
DENTAL PRACTICE



Jose Bottrich

This pretty young lady wanted a wider smile. She felt you could only see her front six teeth. Less than a year later she was smiling like a star!

No bonding just
Invisalign

Cross bite correction



higher³ love
DENTAL PRACTICE

This young lady had a cross bite on one side with poor alignment of her upper teeth.

She was very self conscious and hesitant to smile.



Jose Botwin

Following her Invisalign we performed some minimal bonding to the worn surface of the upper front tooth

Smiles all round!!

Midline Correction



higher3 *laine*
DENTAL PRACTICE



Jane Bittman

This lovely young lady wanted to improve her smile for her wedding. She had a missing upper incisor and the midlines needed correcting. Following her Invisalign treatment we whitened and then placed an implant to replace her missing tooth and a veneer on the upper microdontic incisor.

The groom said "I certainly do!!!"

Under Bite

This young man wanted to correct his teeth to improve his confidence. He had an underbite and cross bite with midline asymmetry. Of course this was a challenging case and took two years to complete. No bonding or veneers...

His winning smile led him to a new job and girlfriend !!



higher 3 lane
DENTAL PRACTICE



Jane Bottinck

Open Bite

This young gentleman was embarrassed about the space between his upper and lower teeth. He struggled with eating and speech. The treatment was challenging and took two years to complete.

What a transformation!!



*higher 3
DENTAL PRACTICE*



Joan Bottland

Increased Overjet correction



higher lane
DENTAL PRACTICE



Jose Botto

This lovely lady had an increased overjet which was causing social embarrassment. She was happy to combine her Invisalign treatment with the use of elastics which helped to reposition her lower jaw.

Her students have been mesmerised by her journey as much as we are with the results!

Deep Bite Correction



higher3 lane
DENTAL PRACTICE



Jane Bottland

One of our first deep bite cases that was treated over 18 months. This lady was actually biting on her gums at the back of her upper teeth.

She was concerned about the trauma it was causing to her gums.

Invisalign works very well in treating deep bites as i think you will agree.

Invisalign Teen

This lovely young lady's parents were searching for orthodontic treatment without extractions. Invisalign Teen allowed us to create the space to carefully align her teeth together with correcting her midlines.

She is now a stunning young model thanks to the confidence of her amazing smile!



higher3
DENTAL PRACTICE



Jose Botto

TRY A NEW SMILE IN 60 SECONDS

Simply scan the code below and take a selfie to start your SmileView Experience



Scan the QR code with your iPhone camera and you will be taken to the SmileView page to start the experience. Alternatively, type in the link below.



<https://www.invisalign.co.uk/SV/116192>

© 2019 Align Technology (BV). All Rights Reserved. Invisalign, ClinCheck, and SmartTrack, among others are trademarks and/or service marks of Align Technology, Inc. or one of its subsidiaries or affiliated companies and may be registered in the U.S. and/or other countries. This is an Align Technology B.V. initiative.

INVISALIGN

Frequently asked questions

How does Invisalign work?

Invisalign aligners move teeth with an appropriate placement of controlled movement on the teeth. Unlike traditional braces, Invisalign

not only controls the amount of movement per aligner, but also the timing of the movement. So at each stage, only certain teeth are allowed to move, as per the Invisalign treatment plan for that particular stage. This results in an efficient force delivery system that moves teeth into the desired prescribed position.

What are aligners made of and what do they look like?

The virtually invisible aligners are made of strong medical grade thermoplastic material, uniquely developed for the Invisalign System.

The aligners are custom-made for you and fit snugly over your teeth.

What is the minimum age of a patient that a doctor can treat with Invisalign?

With experience, an Invisalign Provider can use Invisalign to treat malocclusion for a majority of adults and adolescents who want a better smile. For teenagers, talk to your Invisalign Provider to see if Invisalign Teen may be the right treatment option for your child.

How often must I see my Invisalign Provider once I have started treatment?

Appointment intervals are generally the same as with traditional braces but can be much quicker with less time spent in the dentists' or orthodontists' chair during appointments as no adjustments need to be made to wires/brackets.

Patients typically visit their Invisalign Provider every 4 to 6 weeks to ensure the treatment is progressing as planned, and to receive their next few sets of Invisalign aligners, but your Invisalign Provider will decide based on your treatment.

How long does the Invisalign treatment take?

The total duration of treatment depends on the complexity of the treatment and is generally comparable to that of traditional braces. Typically treatment can last between 3 and 18 months. During your consultation, your Invisalign Provider can provide you with more detailed information

Is the Invisalign treatment painful?

Some people may experience temporary, minor discomfort for a few days, at the beginning of each new stage of treatment when they insert a new aligner. This is normal and is typically described as a feeling of pressure. It is a sign that the aligners are working - moving your teeth gradually, helping you to achieve the final results. This discomfort typically goes away in a couple of days.

Does the procedure work on overbites?

An Invisalign Provider can use Invisalign to treat overbites in the vast majority of adults and adolescents. Consult an Invisalign Provider to determine whether Invisalign is suitable for you.

Are there certain dental conditions that automatically exclude someone from being an eligible patient?

Only your Invisalign Provider can determine if you are a good candidate for Invisalign treatment.

Are bridges a factor in Invisalign treatment?

Because bridges firmly link two or more teeth together, they offer significant resistance to tooth movement. Your Invisalign Provider will be able to determine whether bridges will be a factor in your treatment.

Are crowns a factor in Invisalign treatment?

Crowns (tooth caps) are usually not a factor in Invisalign treatment.

However, sometimes small tooth-coloured composites called "attachments" are bonded onto teeth to help achieve certain movements and are more difficult to bond on crowns than teeth. In these cases, the location of crowns must be carefully evaluated.

An Invisalign Provider can provide further advice.

Can Invisalign close gaps?

Yes. Spaces between teeth are generally easy to close with Invisalign.

Consult an Invisalign Provider to determine whether Invisalign is suitable for you.

Will TMJ affect Invisalign treatment?

To find out if your TMJ problem will adversely impact treatment, consult an Invisalign Provider.

TMJ refers to the temporomandibular (jaw) joint. People with a TMJ condition can have a number of problems with the jaw joint, some of which can be aggravated by appliances and treatments like Invisalign, and some which can improve, remain the same or even cause the condition to deteriorate.



Next steps.

Start your journey to a new smile. And if you start treatment, download the My Invisalign App. It's the perfect way to track your transformed smile with before and after shot comparisons, time-lapse videos plus support and guidance.

We would like to thank all our patients who have given their permission to the contribution in this educational brochure for new patients wanting to learn more about the Invisalign System at our practice.

Invisalign can be life changing and we, at No. 43 Higher Lane Dental , ensure we will do our very best to achieve the best results possible.

Because you are worth it!

Jane Butternorth